

H2-B-W5



SUPER-RAIL Light

The H2-B-W5 safety barrier is used on high speed roads providing protection for both large and small vehicles due to its strength, quality and high containment.

All steel sections are galvanised providing long term maintenance free protection from corrosion.

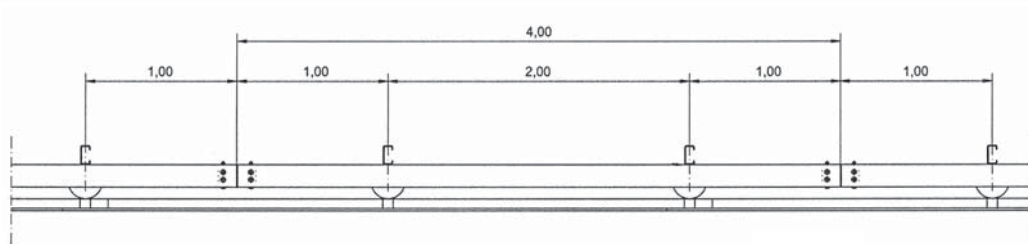
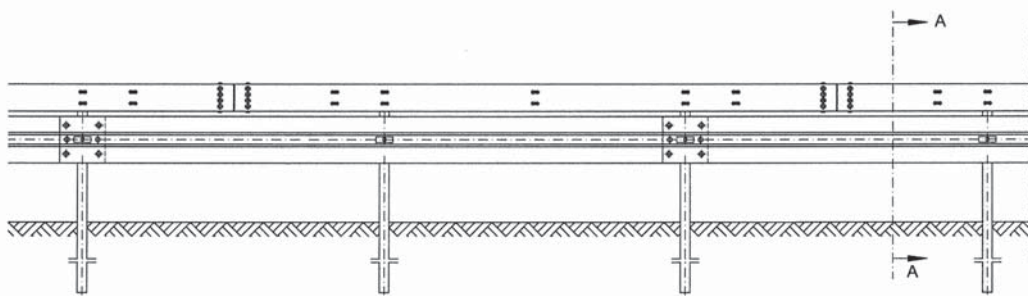
H2-B-W5
Safety Barrier



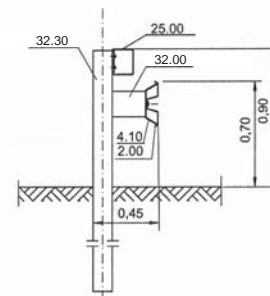
Technical Data: SUPER-RAIL Light

H2-B-W5

Test Standard Acceptance Test Testing Institute	DIN EN 1317 Part 1 and Part 2 TB 11 and TB 51 Bast, Germany
Containment Impact Severity Level Working Width	H2 B W5
Test Length System Height System Weight	53 m 0,90 m 44.4 kg/m Profile A, 43.4 kg/m Profile B



Section A-A



website : www.jpk.ie
 email : info@jpk.ie
 telephone : +353 91 798 146



PASS+CO
 BARRIER SYSTEMS GmbH